

T.D.★ ist:

CHRISTOF GRIESE ACHIM →  
LITTY GERHARD ULLMANN

————— HORNS —————

MARTIN LILLICH

————— BASS★ —————

NIKOLAUS SCHOYBLE

————— DRUMS, COMP. —————

Nikolaus Schoyble's  
TIBETAN DIXIE★

PROGRAMM

★ Powered by Walter Woods

# 1. SET

**OH, NETT** dedicated to D. Coleman (ts)

**SEVERE REVERSE** das schwerwiegend Umge- (ts)

~~Kehre~~ ~~Drums überleitung~~

→ **RIALTO** ach Venedig (ss)

**HENRY** dedicated to H. Mancini (alto)

**JOSHUA SAW...** the battle of Jericho... (ss)

**COHN** einem merkwürdigen Menschen ge-  
widmet

**PAUSENMUSIK** Don't forget the bartenders! ☆

# 2. SET

**PAUSENMUSIK** \_\_\_\_\_

(ss) **JOHANN** nicht Josef! \_\_\_\_\_

**TOE-KNEE** dubble You ~~drums über~~

(all) **PERUMOLFE** ??? \_\_\_\_\_

**SCHUBERT** Dads Dr gtoiln, Frau? \_\_\_\_\_

**Q-HEE** Tack-Tack \_\_\_\_\_

**ENDMUSIK** - - - - -

Fingale Deep Down

The page contains a large, hand-drawn musical score for a piece titled 'Fingale Deep Down'. The notation is written in black ink on aged, slightly stained paper. It features a series of rhythmic patterns and notes, including quarter notes, eighth notes, and rests, connected by lines. The overall style is sketchy and expressive, typical of a composer's working draft. The title 'Fingale Deep Down' is written in a large, cursive font at the top of the page.

ohne cue

ts (soprano)

# OH, NETT

♩ = 126

Musical staff with rhythmic notation consisting of vertical lines and beams. A double bar line is followed by the word "free" and a circled "Soco 1".

H2 cue 12/100

tutti (low)

Musical staff with notes and rests. A double bar line is followed by the word "free" and "Soco 2".

H2<sup>SS</sup> cue 12/126

tutti

Musical staff with notes and rests. A double bar line is followed by the word "free" and "Soco 3".

H2<sup>alto</sup> cue 12/80

tutti

Musical staff with notes and rests. A double bar line is followed by the word "tutti".

H2<sup>SS</sup> cue 12/120

tutti

Musical staff with notes and rests. A double bar line is followed by the word "tutti".

Arlo in SEVERAL PLACES

# SEVERE REVERSE

d =

bass

(A) (3) (2) (1)

SOLI → (A) ~~ohne sep~~ al  $\text{♩}$  (1) Gebhard

# RIACTO

3) open play long notes rubato with HORN 3

~~110~~ ~~155~~ OU CUE → 1 3 1's 1x=2x! \*

(HORN 1: ♯ ♯ ♯ ♯ ♯ ♯ ♯ ♯ ♯ ♯)

$\text{♩} = 60$

\* innerhalb eines Durchganges sind die □ ◊ ◊ Noten dieselben!

— 2 —

nikolaus schäuble  
bayernallee 21 D 1000 berlin 19  
(030) 304 2101

Anfang 1x

Dal. g. 2x u. 1. Solo

2. 1. 1. x = 2x

fina

2x

37  
fina  
SOLOS

Schluss dal. g. w/rep al fine

# HENRY

~~alt~~

1 = 5

55

Handwritten musical notation on a five-line staff. It includes notes, rests, and various annotations. A circled '20' is written above the first measure. The word 'bass' is written below the staff in the second measure. There are several 'x' marks and other symbols scattered throughout the notation.

8x (4x und 4x TH) 0 5.

Handwritten musical notation on a five-line staff, continuing from the previous system. It features notes, rests, and annotations including '3b' and '3b' above notes. A circled '4x' is written to the left of the staff.

5x

THGHA  
s. oben

fine

und so: da 1' 5. (2k 4x)  
al fine

A large rectangular box containing the word 'BACKGROUND' written in a stylized, cursive font. Below the word are two vertical lines with small circles at their bases, resembling stems or markers.

altus

# HENRY

- 12 -

20 bass

Handwritten musical notation for the first system, featuring a staff with notes, rests, and various annotations like "20 bass" and "x".

6x (4x + 4x TH)

TÖNE WECHSELN

Handwritten musical notation for the second system, including notes, rests, and annotations like "TÖNE WECHSELN" and "8x".

Handwritten musical notation for the third system, showing a sequence of notes on a staff.

BACCH-  
GROUND

Handwritten musical notation for the fourth system, labeled "BACCH-GROUND", showing a sequence of notes.

THEMA  
RUBATO

Handwritten musical notation for the fifth system, labeled "THEMA RUBATO", showing a sequence of notes.

Handwritten musical notation for the sixth system, including notes, rests, and annotations like "File nach Solo" and "4+".



SS (ts, as)

# ZOSHUA SAW..

Handwritten musical score on five staves. The first staff begins with a circled 'A' and the text 'SS on cue'. The notation includes various rhythmic values, accidentals (sharps, flats, naturals), and dynamic markings. The fourth staff includes the text '(fine) B od lib with'. The fifth staff ends with the word 'repeat' followed by a circled 'A'.

Solo SS Schluss ABA

(A) Interlude

(2) Duo bs/dr

(2) as

3 DR

→ Tutti

Soprano

TH(A)

COHN

Handwritten musical notation on a five-line staff. The first measure is heavily scribbled out with black ink. The second measure contains a single note with a '4' above it. The third, fourth, and fifth measures each contain a single note with a horizontal line above it. A '1/2' is written at the end of the staff.

Handwritten musical notation on a five-line staff. The first measure has a circled 'X' above a note. The second, third, and fourth measures each have a note with a horizontal line above it. The fifth measure has a circled 'C' above a note. The sixth and seventh measures each have a circled 'X' above a note. A '1/2' is written below the fourth measure, and another '1/2' is written below the sixth measure.

Handwritten musical notation on a five-line staff. The second measure has a circled 'X' above a note. The fifth measure has a circled 'D' above a note. The sixth measure has a circled 'X' above a note. A '1/2' is written below the second measure, another '1/2' below the fifth measure, and a third '1/2' below the seventh measure.

Handwritten musical notation on a five-line staff. The first measure has a circled 'X' above a note. The second measure is empty. The third measure has a note with a horizontal line above it. A large rectangular box is drawn over the right side of the staff, containing the handwritten text 'Koucoulli Page 100 etc. D.C.'.

~~Handwritten symbol~~ Pausenmusik  
SOPRANO

give cue for TH

TON

TH

4/4

TH

s f diy

last TH 2nd x fine

2x

# JOHANN

FS

8

16

SPARSE IMPRO (LONG NOTES)

**A**

STACC.

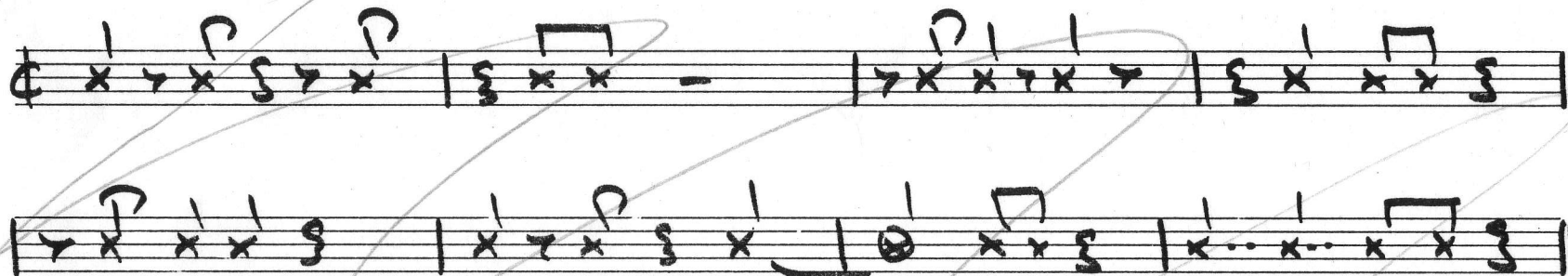
FINE

THEMA

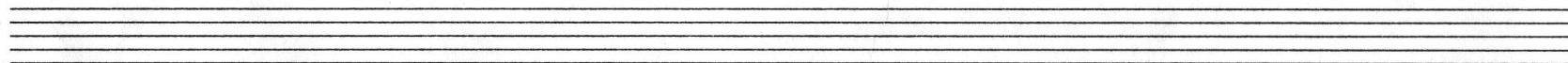
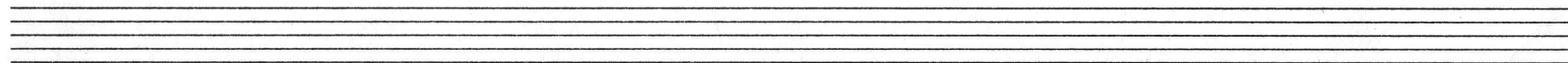
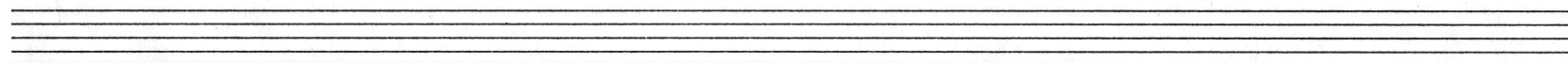
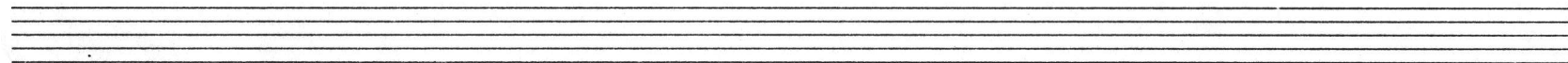
**B**

SCHLUSS  
A B A  
FINE

132



schluß ab THEMA u fine



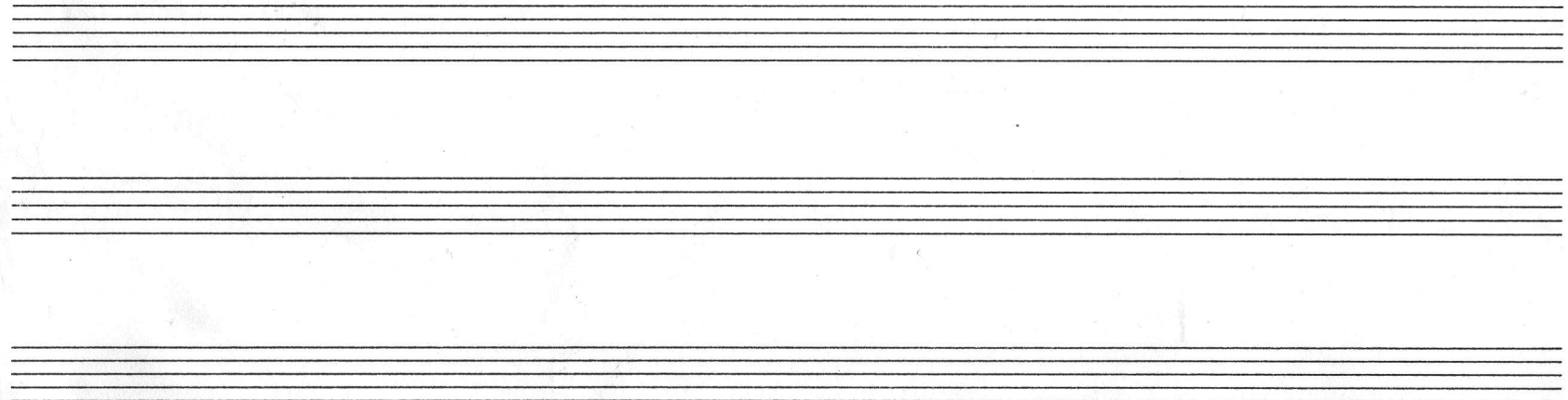
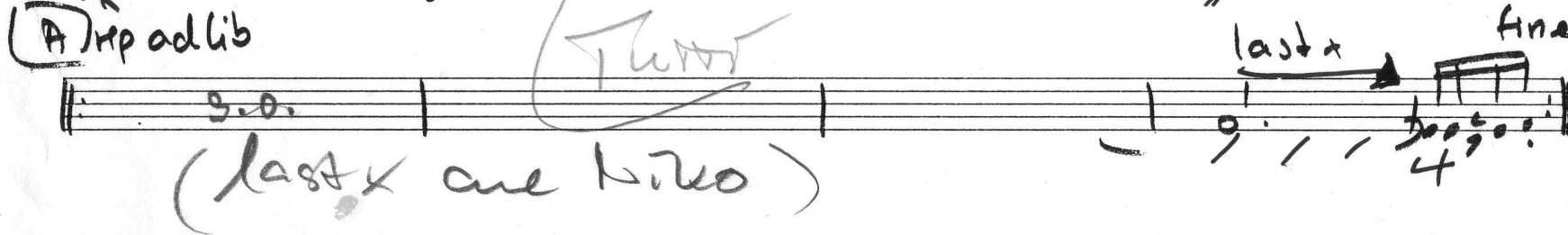
♩♩♩

Bluesfeel

# TOE - KNEE

XVII

(A) mp adlib + imp no



♩ = 120

nikolaus schäuble  
bayernallee 21 D 1000 berlin 19  
(030) 3042101

H423

1

I

alto-flute

1x 3. Bläser  
2x ober

on cue

(A) ABA

PERNO MOCEE

1

dr. b

finger 3rd x

73

SOLO

repeat (A)

Flute Duo

Form **SCHLUSS ABAB**

f/s d=84 f/s

# SCHUBERT

(9) 4x parts

84  
bass

stacc

sf (25)

mp 4 bar

29

cue 1 2 3 33 4

after ss - solo

4

4

4

4

fine

ss unisono

4

4

D.C.

nach soli ~~da~~ at fine

ss - solo

Takt 1+2 background solos

Reprise  
unisono solo at fine

d=84



ts DP. SOLO INTRO

# Q-MEE

2x Theme

800 throughout

||: open

open

Schlussklänge

1x

Ende kurz

open

open

open

1st x wo

ausdrücke **fp** - Solo  
 (beß - solo) schluss des solo

\* vorletztes Mal Tutti - IMPROV.